

BRIGER PARCELS G, H AND J

BEING A REPLAT OF A PORTION OF BRIGER TRACT PLAT NO. 1, AS RECORDED IN PLAT BOOK 54, PAGE 35,
PUBLIC RECORDS OF PALM BEACH COUNTY, FLORIDA, LYING IN SECTION 12, TOWNSHIP 43 SOUTH, RANGE 42 EAST,
CITY OF WEST PALM BEACH, PALM BEACH COUNTY, FLORIDA.
SHEET 3 OF 7

MATCH TO SHEET 4

MATCH TO SHEET 4

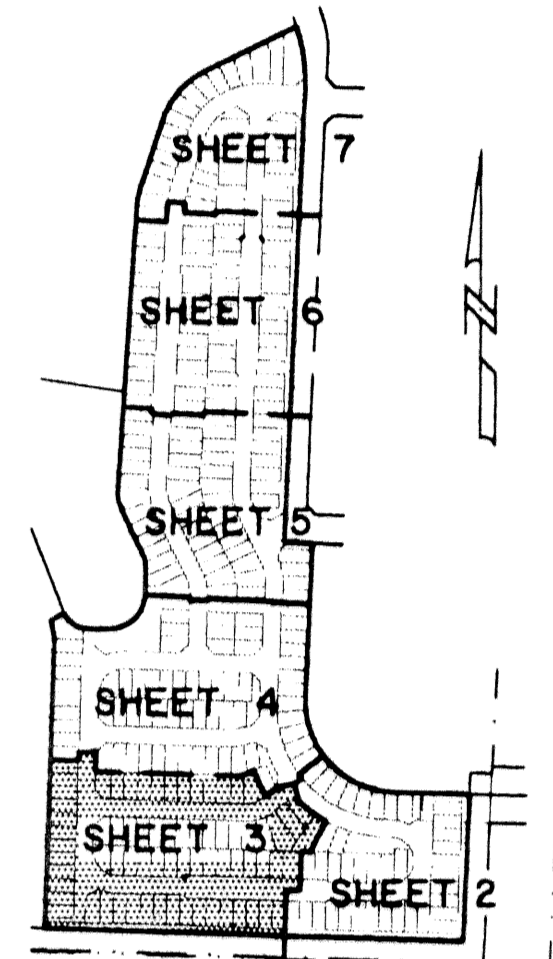
MATCH TO SHEET 4

MATCH TO SHEET 2

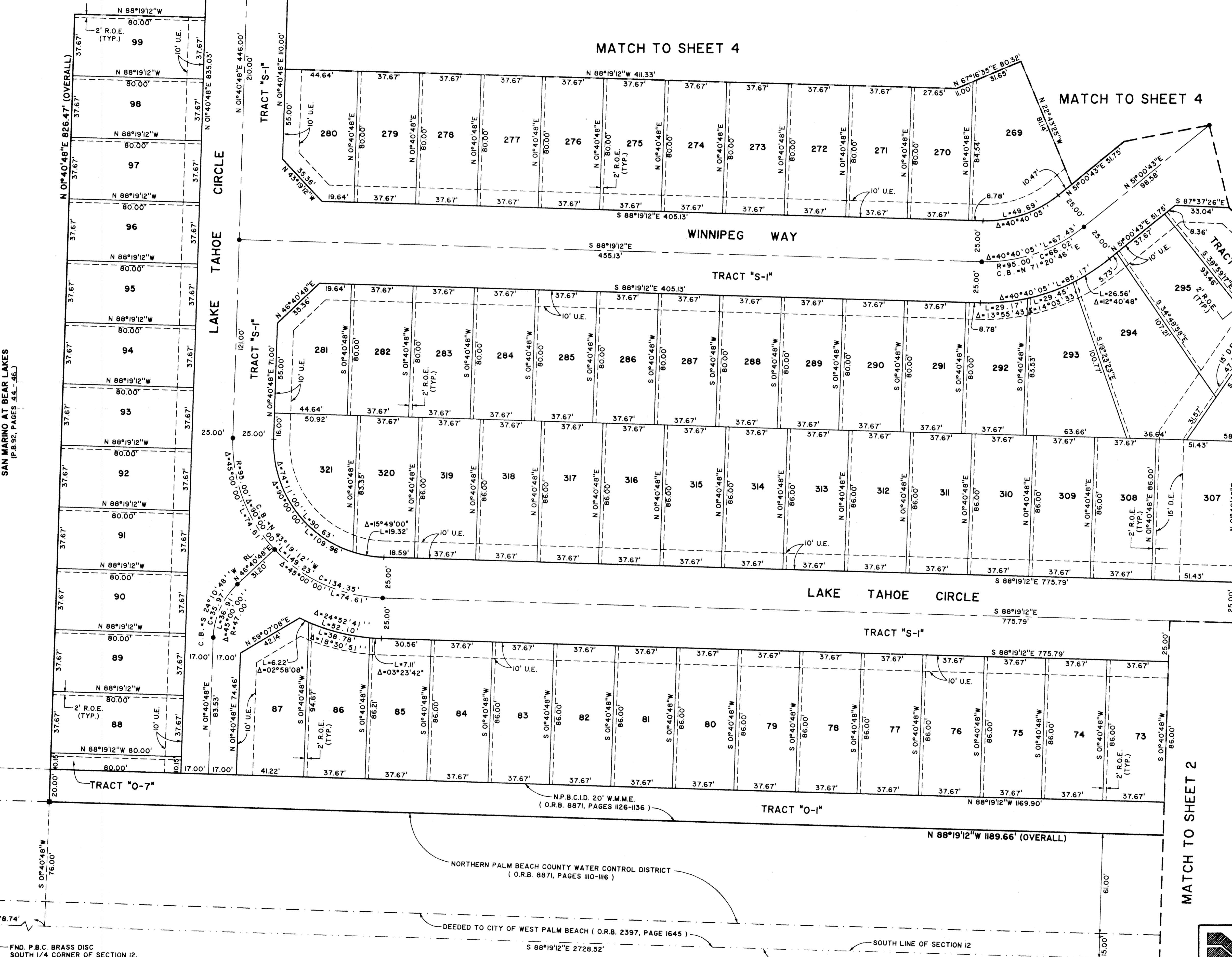
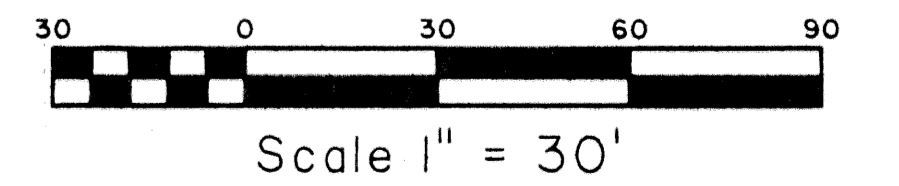
MATCH TO SHEET 2

MATCH TO SHEET 2

STATE OF FLORIDA SS
COUNTY OF PALM BEACH
THIS PLAT WAS FILED FOR RECORD AT
M., THIS DAY OF 2001
AND DULY RECORDED IN PLAT BOOK NO. ON PAGE
DOROTHY H. WILKEN,
CLERK OF THE CIRCUIT COURT
BY D.C.



KEY MAP
NOT TO SCALE



SAN MARINO AT BEAR LAKES
(P.B. 92, PAGES 44-56)

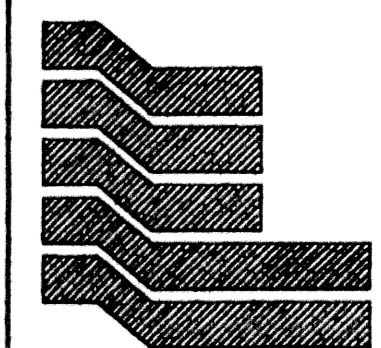
FND. P.B.C. BRASS DISC
SOUTH 1/4 CORNER OF SECTION 12,
TOWNSHIP 43 S., RANGE 42 E.

NORTHERN PALM BEACH COUNTY WATER CONTROL DISTRICT
(O.R.B. 8871, PAGES 110-116)

DEEDED TO CITY OF WEST PALM BEACH (O.R.B. 2397, PAGE 1645)

STANFORD AT THE VILLAGES AT PALM BEACH LAKES
(P.B. 62, PAGES 141-146)

30' SANITARY FORCE MAIN EASEMENT
(O.R.B. 2322, PAGES 1655-1657)



Landmark Surveying & Mapping Inc.
1850 Forest Hill Boulevard
Ph. (561) 433-5405 Suite 100 W.P.B. Florida
LB # 4396

BRIGER PARCELS G, H, AND J